

GO REGULATOR

Electrically Heated Dual Pressure Regulators

The Dual Heated Pressure Regulator is designed to supply heat to samples entering instrumentation systems. It can be used to preheat liquids, to prevent condensation of gases or to vaporize liquids prior to gas analysis. Significant space savings can be realized due to the utilization of two discreet regulators that are heated by a common source.

The modular design of the Dual Heated Regulator consists of a heating element and pressure control sections. The pressure control sections are patterned after the time proven design of the PR-1 pressure reducing regulator and provides the same excellent outlet pressure stability. The heat exchanger section is made up of a body and a heating element.

The Dual Heated Pressure Regulators are KEMA (Cenelec) approved. The electrical components of this unit are securely housed in a Class A, B, C, D conduit assuring that there is always an adequate flame path between the environment and the controller. Safety considerations can be further enhanced by using the optional TCO (Thermal Cut Out) heater cartridge and proportional controller. These features enable the unit to boast a T3 rating with 150 watts of power!

Features & Specifications

- 316L stainless steel construction
- Optional Hastelloy C and Monel
- Electropolished body with better than 25 Ra finish in diaphragm cavity
- Operating temperatures up to 380° F (193° C)
- Bubble tight shutoff
- Outlet pressure ranges are 0–10, 0–25, 0–50, 0–100, 0–250 and 0–500 psig
- Available in 110VAC or 240VAC
- Heating capacity ranges are 40, 50, 100 and 150 watts
- Optional TCO heating cartridge and proportional controller
- KEMA certification # Ex-96.D.1862
- C_v flow coefficients of 0.06, 0.025, 0.2

405 Centura Court
PO Box 4866
Spartanburg, SC 29303
tel 864.574.7966
fax 864.587.5608
www.goreg.com
sales@goreg.com

Electrically Heated Dual Pressure Regulators

How to Order

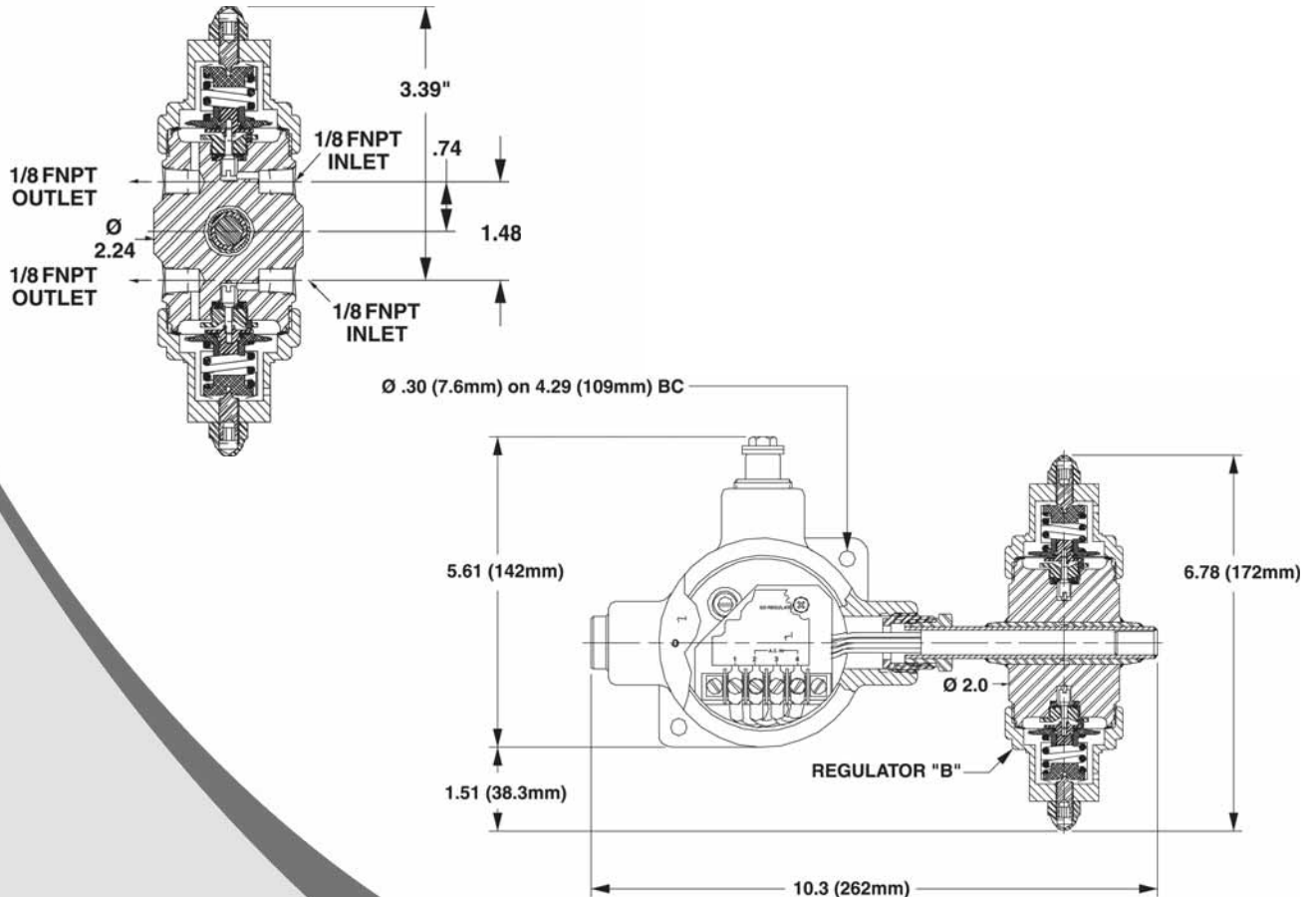
See page 3 for standard configurations. Consult factory for additional configurations.
Port locations, see page 4.

Maximum Temperature & Operating Inlet Pressures

Seat Material	Maximum Temperature	@	Maximum Operating Inlet Pressure
Tefzel®	Up to 175° F (80° C)	@	3600 psig (24.82 MPa)
	176° F to 300° F (80° C to 148° C)	@	1000 psig (6.90 MPa)
	301° F to 380° F (148° C to 193° C)	@	400 psig (2.76 MPa)
High Density Teflon®	Up to 175° F (80° C)	@	3600 psig (24.82 MPa)
	176° F to 300° F (80° C to 148° C)	@	1000 psig (6.90 MPa)
	301° F to 380° F (148° C to 193° C)	@	400 psig (2.76 MPa)
PCTFE (formerly Kel-F81)	Up to 380° F (193° C)	@	3600 psig (24.82 MPa)
Polyimide	Up to 380° F (193° C)	@	6000 psig (41.37 MPa)
PEEK	Up to 380° F (193° C)	@	6000 psig (41.37 MPa)

Tefzel® and Teflon® are registered trademarks of Dupont.

Outline and Mounting Dimensions



DHR Dual Electrically Heated Regulator

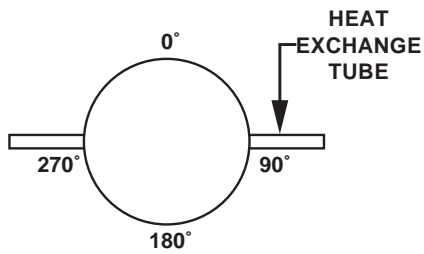
1		Material of Body													
4		Monel													
A		Port Configuration (page 4) STANDARD BODY "A" (ONE INLET PORT AND ONE OUTLET PORT ON EACH SIDE)													
		Seat Material (Regulator A)													
A		Tefzel													
B		CF Teflon													
C		Polyimide													
H		PCTFE (formerly Kel-F 81)													
Q		PEEK													
3		Flow Coefficient (Cv) (Regulator A) 0.06													
		Output Range (Regulator A)													
C		0 - 10 Psig													
D		0 - 25 Psig													
E		0 - 50 Psig													
G		0 - 100 Psig													
I		0 - 250 Psig													
J		0 - 500 Psig													
1		Cap Assembly (Regulator A) Tamper Proof, Standard, S.S.													
4		Tamper Proof, Panel Mount, S.S.													
		Seat Material (Regulator B)													
A		Tefzel													
B		CF Teflon													
C		Polyimide													
H		PCTFE (formerly Kel-F 81)													
Q		PEEK													
3		Flow Coefficient (Cv) (Regulator B) 0.06													
		Output Range (Regulator B)													
C		0 - 10 Psig													
D		0 - 25 Psig													
E		0 - 50 Psig													
G		0 - 100 Psig													
I		0 - 250 Psig													
J		0 - 500 Psig													
1		Cap Assembly (Regulator B) Tamper Proof, Standard, S.S.													
4		Tamper Proof, Panel Mount, S.S.													
1		Temperature Range 55° F - 85° F													
2		75° F - 175° F													
3		130° F - 300° F													
4		260° F - 380° F													
6		No Electronics													
1		Heater Wattage 40W													
2		50W													
3		100W													
4		150W													
1		Controller Type On / Off													
2		Proportional													
1		Thermistor Type Thermally Protected (TCO)													
2		Non-Thermally Protected													
1		Voltage 110 VAC													
2		240 VAC													

D H R -

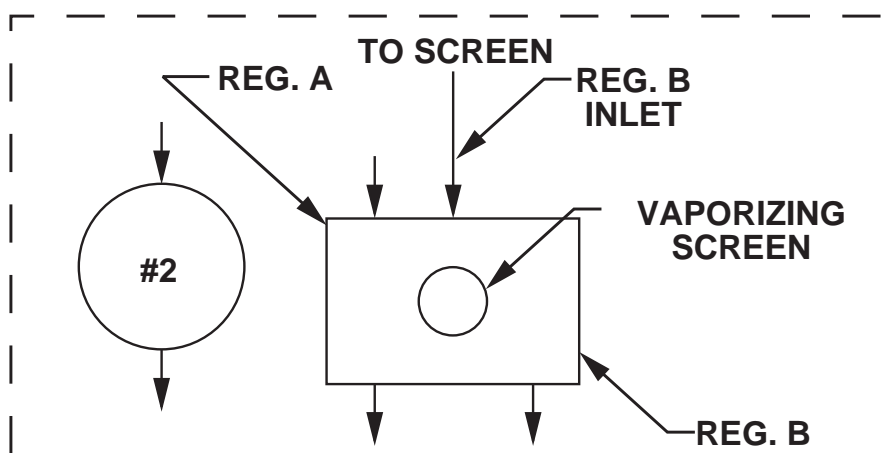
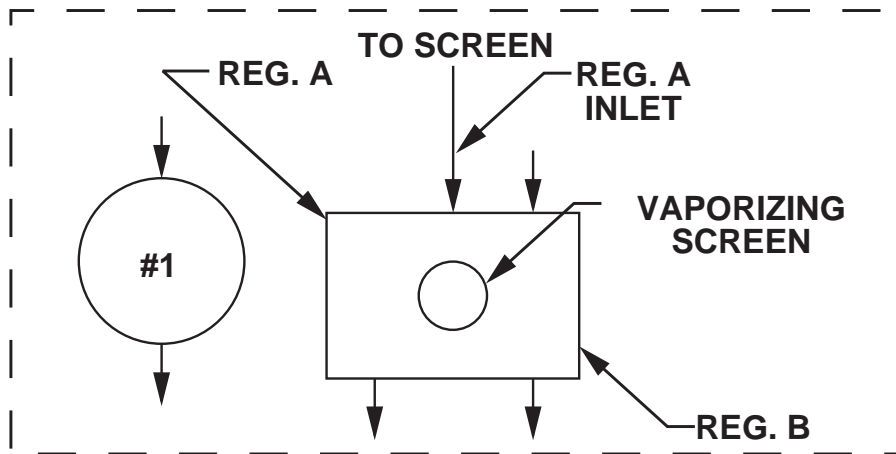
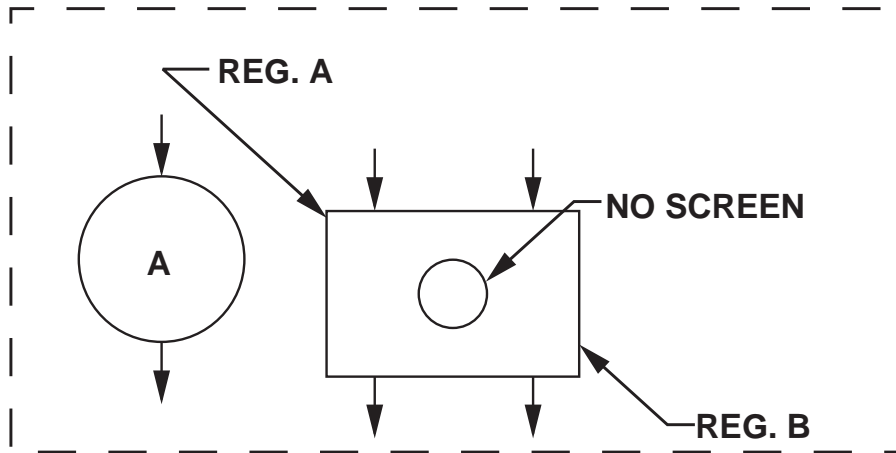
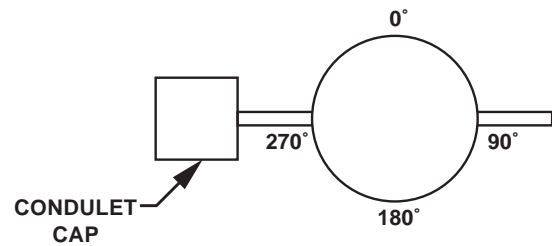
Material	Port Config.	Seat Material	Cv Flow	Output Range	Cap Assembly	Seat Material	Cv Flow	Output Range	Cap Assembly	Temp Range	Heater Wattage	Controller Type	Thermistor Type	Voltage
		Regulator A				Regulator B								

REGULATOR BODY PORTING CONFIGURATIONS FOR DHR (STEAM & ELECTRIC)

STEAM HEATED REGULATOR REFERENCE CLOCK



ELECTRICALLY HEATED REGULATOR REFERENCE CLOCK



LOCATION OF PORTS FROM TOP OF REGULATOR "A"
ARROW POINTING TOWARD BODY IS INLET
ARROW POINTING AWAY FROM BODY IS OUTLET