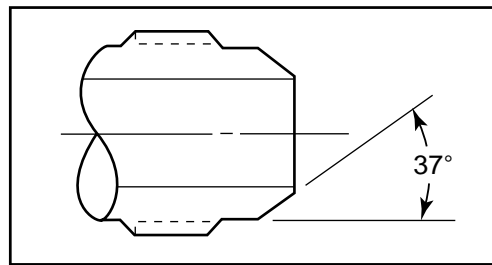


# Adapters/Couplings - Male-to-Male JIC One Piece Adapters

Autoclave Engineer's male-to-male JIC one-piece adapters are available in low, medium, and high pressure configurations. JIC adapters are machined from cold worked stainless steel. Other materials are available upon request. Contact your local Sales Representative for optional information. The following tables list our standard adapters with dimensions.



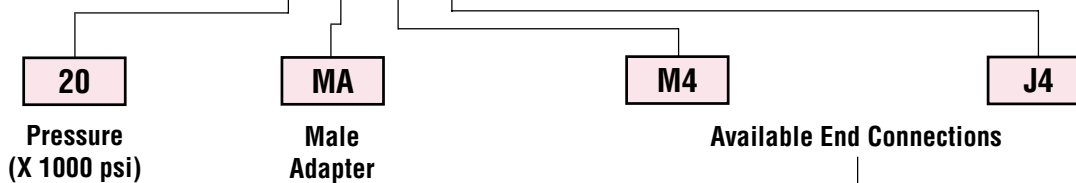
## Adapter End Configuration



JIC connections consist of a 37° angle.

## Ordering Procedure

Typical catalog number: 20 MA M4 J4

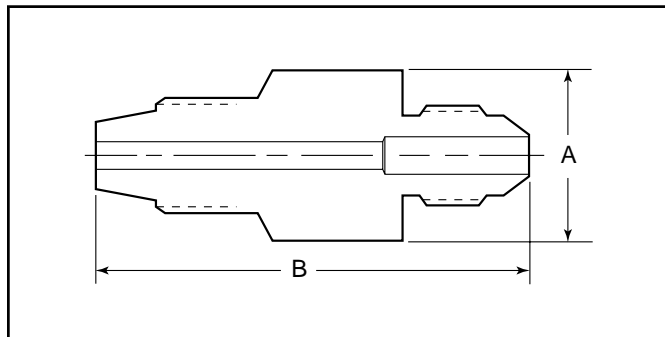


<b>J4</b> - 1/4" JIC	<b>L4</b> - 1/4" Low Pressure	<b>M4</b> - 1/4" Medium Pressure	<b>H4</b> - 1/4" High Pressure	<b>P4</b> - 1/4" NPT
<b>J6</b> - 3/8" JIC	<b>L6</b> - 3/8" Low Pressure	<b>M6</b> - 3/8" Medium Pressure	<b>H6</b> - 3/8" High Pressure	<b>P6</b> - 3/8" NPT
<b>J8</b> - 1/2" JIC	<b>L8</b> - 1/2" Low Pressure	<b>M9</b> - 9/16" Medium Pressure	<b>H9</b> - 9/16" High Pressure	<b>P8</b> - 1/2" NPT
<b>J10</b> - 5/8" JIC		<b>M12</b> - 3/4" Medium Pressure		
<b>J12</b> - 3/4" JIC		<b>M16</b> - 1" Medium Pressure		
<b>J16</b> - 1" JIC				

Note: Special material one piece adapters may be supplied with four flats in place of standard hex.

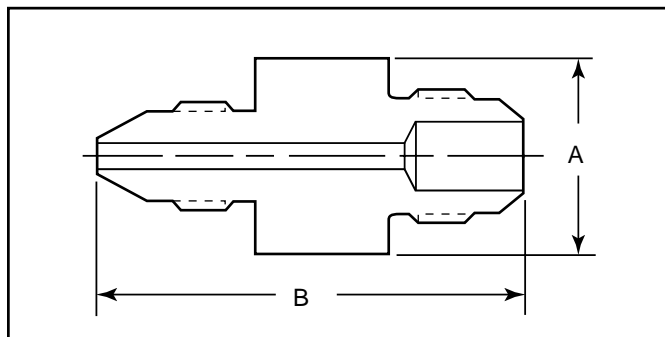
## Low-Pressure to JIC Adapters

Catalog Number	Connection L/P	Connection JIC	Dimension inches (mm)	
			A Hex	B
11MAL4J4	SW250	1/4"	0.75 (19.1)	1.88 (47.6)



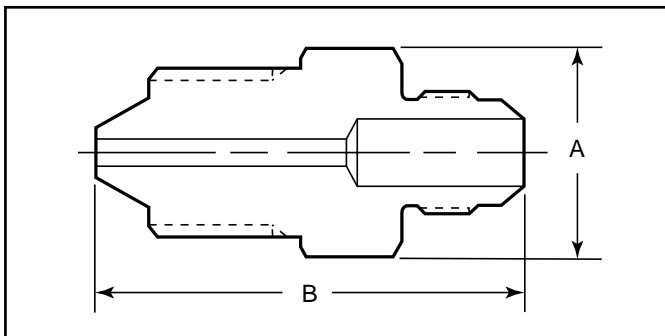
## Medium-Pressure to JIC Adapters

Catalog Number	Connection M/P	Connection JIC	Dimension inches (mm)	
			A Hex	B
15MAM4J12	SF250CX	3/4"	1.38 (34.9)	2.25 (57.1)
15MAM6J12	SF375CX	3/4"	1.38 (34.9)	2.44 (61.9)
15MAM9J12	SF562CX	3/4"	1.38 (34.9)	2.69 (68.2)
15MAM12J12	SF750CX	3/4"	1.38 (34.9)	2.88 (73.0)
15MAM12J16	SF750CX	1"	1.50 (34.9)	2.88 (73.0)
15MAM16J12	SF1000CX	3/4"	1.38 (34.9)	3.38 (85.7)
15MAM16J16	SF1000CX	1"	1.50 (38.1)	3.50 (89.0)
20MAM4J4	SF250CX	1/4"	0.75 (19.1)	1.63 (41.3)
20MAM4J6	SF250CX	3/8"	0.81 (20.6)	1.75 (44.5)
20MAM4J8	SF250CX	1/2"	1.00 (25.4)	2.00 (50.8)
20MAM6J4	SF375CX	1/4"	0.75 (19.1)	1.75 (44.5)
20MAM6J6	SF375CX	3/8"	0.81 (20.6)	1.81 (46.0)
20MAM6J8	SF375CX	1/2"	1.00 (25.4)	2.00 (50.8)
20MAM9J4	SF562CX	1/4"	0.94 (23.8)	2.13 (54.0)
20MAM9J6	SF562CX	3/8"	0.94 (23.8)	2.13 (54.0)
20MAM9J8	SF562CX	1/2"	1.00 (25.4)	2.25 (57.1)
20MAM12J4	SF750CX	1/4"	1.19 (30.1)	2.38 (60.3)
20MAM12J6	SF750CX	3/8"	1.19 (30.1)	2.38 (60.3)
20MAM12J8	SF750CX	1/2"	1.19 (30.1)	2.50 (63.5)
20MAM16J4	SF1000CX	1/4"	1.38 (34.9)	3.13 (79.3)
20MAM16J6	SF1000CX	3/8"	1.38 (34.9)	3.13 (79.3)
20MAM16J8	SF1000CX	1/2"	1.38 (34.9)	3.13 (79.3)



## High-Pressure to JIC Adapters

Catalog Number	Connection H/P	Connection JIC	Dimension inches (mm)	
			A Hex	B
20MAH4J4	F250C	1/4"	0.75 (19.1)	1.63 (41.3)
20MAH4J6	F250C	3/8"	0.81 (20.6)	1.63 (41.3)
20MAH4J8	F250C	1/2"	1.00 (25.4)	1.88 (47.6)
20MAH6J4	F375C	1/4"	0.81 (20.6)	1.94 (49.1)
20MAH6J6	F375C	3/8"	0.81 (20.6)	1.94 (49.1)
20MAH6J8	F375C	1/2"	1.00 (25.4)	2.19 (55.5)
20MAH9J4	F562C	1/4"	1.19 (30.1)	2.31 (58.7)
20MAH9J6	F562C	3/8"	1.19 (30.1)	2.31 (58.7)
20MAH9J8	F562C	1/2"	1.19 (30.1)	2.38 (60.3)
20MAH4J10	F250C	5/8"	1.19 (30.1)	2.13 (54.0)



Maximum pressure rating is based on the lowest rating of any component. Actual working pressure may be determined by tubing pressure rating, if lower.

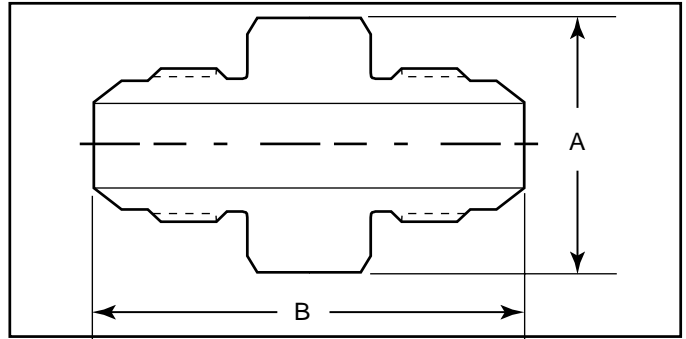
Note: For pressure rating see ordering procedure.

All Dimensions for reference only and are subject to change.

For prompt service, Autoclave stocks select products.  
Consult factory.

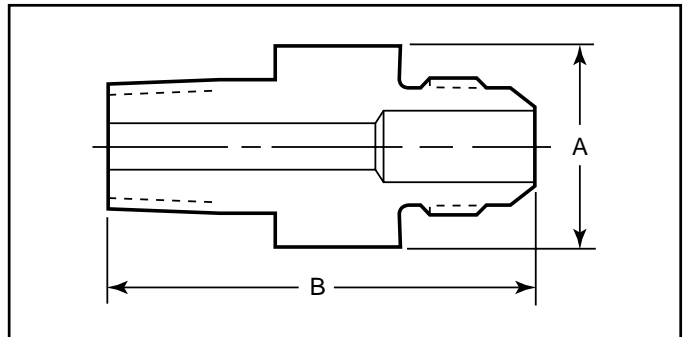
## JIC to JIC Adapters

Catalog Number	Connection JIC	Connection JIC	Dimension inches (mm)	
			A Hex	B
20MAJ6J6	3/8	3/8"	0.81 (20.6)	1.56 (39.7)



## NPT to JIC Adapters

Catalog Number	Connection NPT	Connection JIC	Dimension inches (mm)	
			A Hex	B
10MAP4J4	1/4	1/4"	0.75 (19.1)	1.69 (42.8)
10MAP4J6	1/4	3/8"	0.81 (20.6)	1.75 (44.5)
10MAP4J8	1/4	1/2"	1.00 (25.4)	1.94 (49.1)
10MAP4J12	1/4	3/4"	1.38 (34.9)	2.25 (57.1)
10MAP6J4	3/8	1/4"	0.75 (19.1)	1.69 (42.8)
10MAP6J6	3/8	3/8"	0.81 (20.6)	1.75 (44.5)
10MAP6J8	3/8	1/2"	1.00 (25.4)	1.81 (46.0)
10MAP6J12	3/8	3/4"	1.38 (34.9)	2.25 (57.1)
10MAP8J4	1/2	1/4"	0.94 (23.8)	2.00 (50.8)
10MAP8J8	1/2	1/2"	1.00 (25.4)	2.13 (54.0)
10MAP8J12	1/2	3/4"	1.38 (34.9)	2.44 (61.9)



Maximum pressure rating is based on the lowest rating of any component. Actual working pressure may be determined by tubing pressure rating, if lower.

Note: For pressure rating see ordering procedure.

All Dimensions for reference only and are subject to change.

For prompt service, Autoclave stocks select products.  
Consult factory.