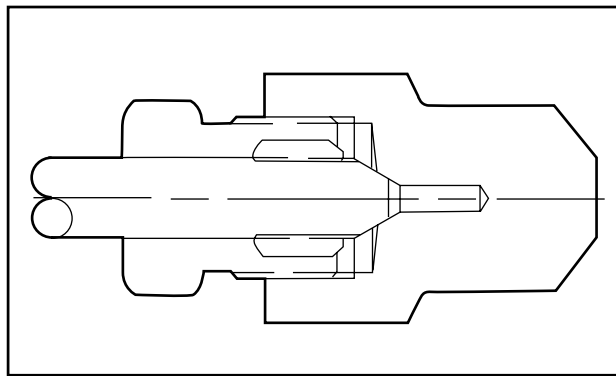


Adapters/Couplings - Header Couplings

Autoclave Engineer's offers weld style Header Couplings in a number of designs and materials. The standard materials are SAE-4130 and Inconel 625. Other materials are listed in the tables. Header couplings are available drilled through or blind drilled, allowing final drill through after welding. The couplings can be supplied with any style of Autoclave connection or special connections if required. Header couplings come standard with 316 SS glands and collars for our medium and high-pressure connections. Models not shown are available upon request. Contact your local sales representative.

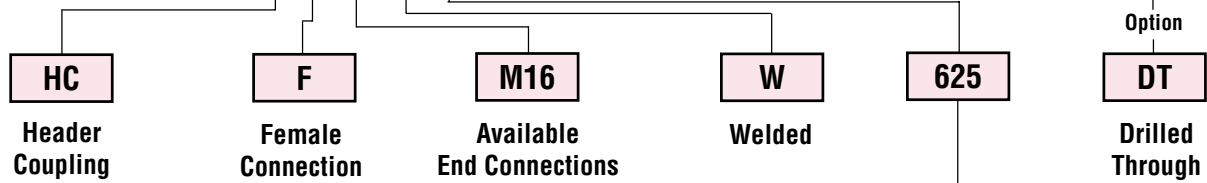


Header Coupling



Ordering Procedure

Typical catalog number: HC F M16 W 625 DT



SAE 4130 - 4130
Inconel 625 - 625
2205 Duplex - 2205
316 SS - 316
A105 - 105
A105N - 105 Normalized

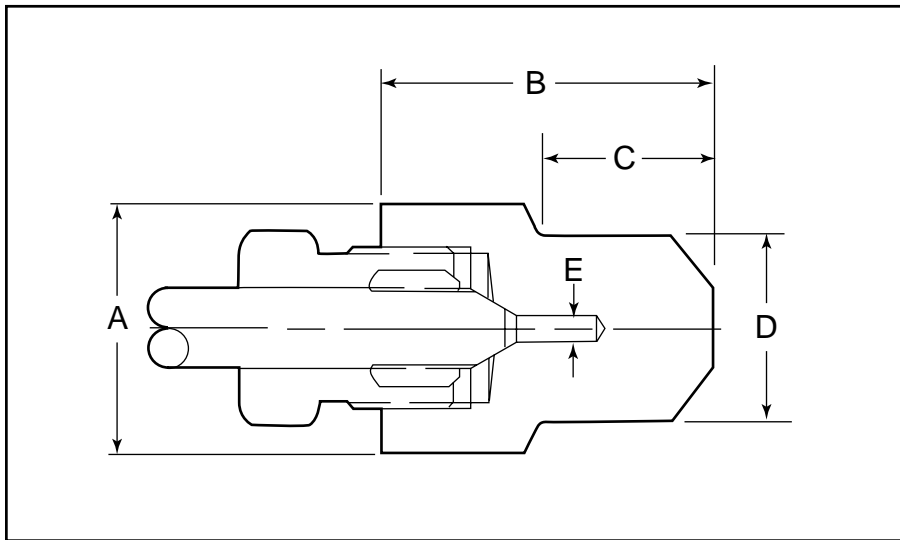
M4 - 1/4" Medium Pressure	H4 - 1/4" High Pressure
M6 - 3/8" Medium Pressure	H6 - 3/8" High Pressure
M9 - 9/16" Medium Pressure	H9 - 9/16" High Pressure
M12 - 3/4" Medium Pressure	
M16 - 1" Medium Pressure	

Female Medium-Pressure Header Coupling Blind End

Catalog Number	Material	Pressure psi (bar)	Female M/P	Dimension inches (mm)				
				A Flats	B	C	D	E
HCFM16W316	316 SS	10,000 (690)	SF1000CX20	1.75** (44.45)	2.62 (66.55)	1.00 (25.40)	1.38 (34.93)	0.56 (14.27)
HCFM16W2205	2205 Duplex	15,000 (1034)	SF1000CX10	1.75 (44.45)	3.00 (76.20)	1.05 (26.59)	1.31 (33.27)	0.69 (17.48)

Female High-Pressure Header Coupling Blind End

Catalog Number	Material	Pressure psi (bar)	Female H/P	Dimension inches (mm)				
				A Flats	B	C	D	E
HCFH9W4130	SAE-4130	15,000 (1034)	F562C	1.50 (38.10)	2.31 (58.67)	1.19 (30.18)	1.31 (33.27)	0.19 (4.75)
HCFH9W625	Inconel 625	30,000 (2068)	F562C	1.50 (38.10)	2.31 (58.67)	1.19 (30.18)	1.31 (33.27)	0.19 (4.75)
HCFH16W4130	SAE-4130	20,000 (1379)	SF1000CX43	1.75 (44.45)	3.00 (76.20)	1.05 (26.59)	1.32 (33.53)	0.44 (11.10)
HCFH16W625	Inconel 625	22,000 (1551)	SF1000CX43	1.75 (44.45)	3.00 (76.20)	1.05 (26.59)	1.32 (33.53)	0.44 (11.10)



Gland and collar supplied with high pressure connections.

Maximum pressure rating is based on the lowest rating of any component.
Actual working pressure may be determined by tubing pressure rating, if lower.

All Dimensions for reference only and are subject to change.

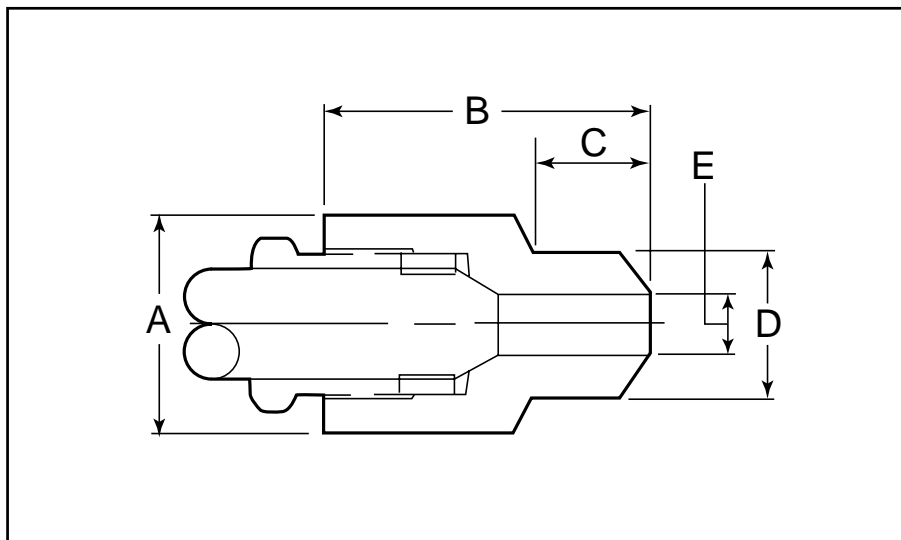
For prompt service, Autoclave stocks select products. Consult factory.

Female Medium-Pressure Header Coupling Drill Through

Catalog Number	Material	Pressure psi (bar)	Female M/P	Dimension inches (mm)				
				A Flats	B	C	D	E
HCFM12W4130DT	SAE-4130	20,000 (1379)	SF750CX	1.375 (34.93)	2.63 (66.68)	1.05 (26.59)	1.32 (33.53)	0.44 (11.10)
HCFM16W4130DT	SAE-4130	20,000 (1379)	SF1000CX	1.75 (44.45)	3.00 (76.20)	1.05 (26.59)	1.32 (33.53)	0.56 (14.27)
HCFM16W105DT	SA-105	12,000 (827)	SF1000CX	1.75 (44.45)	3.00 (76.20)	1.05 (26.59)	1.32 (33.53)	0.56 (14.27)

Female High-Pressure Header Coupling Drill Through

Catalog Number	Material	Pressure psi (bar)	Female H/P	Dimension inches (mm)				
				A Flats	B	C	D	E
HCFH9W4130DT	SAE-4130	20,000 (1379)	F562C	1.13 (28.58)	2.44 (61.98)	1.13 (28.70)	1.31 (33.27)	0.36 (9.12)
HCFH9W105DT	SA-105	20,000 (1379)	F562C	2.00 (50.80)	2.00 (50.80)	0.00 (0.00)	0.00 (0.00)	0.19 (4.78)



Gland and collar supplied with high pressure adapters.

Maximum pressure rating is based on the lowest rating of any component.
Actual working pressure may be determined by tubing pressure rating, if lower.

Note: For pressure rating see ordering procedure.

All Dimensions for reference only and are subject to change.

For prompt service, Autoclave stocks select products. Consult factory.