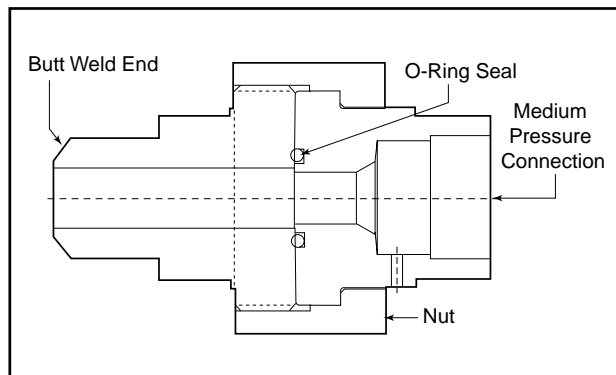


Adapters/Couplings - EZ-Union Adapters

Autoclave Engineers offers an EZ-Union adapter providing a fast and simple way to install or remove components from a pressure system. The face seal o-ring design provides a positive seal with easy and reliable operation. EZ-Union adapters can be provided with any standard or special connection combination. Optional materials available upon request. Contact your local Sales Representative for optional information and sizes not shown. The following tables show the standard adapters with dimensions.

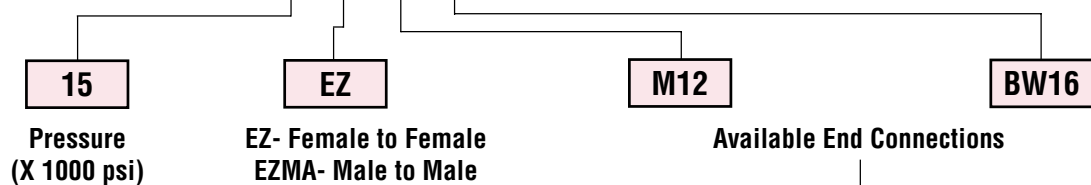


EZ-Union Adapter



Ordering Procedure

Typical catalog number: 15 EZ M12 BW16



BW4 - 1/4" Butt-Weld
BW6 - 3/8" Butt-Weld
BW8 - 9/16" Butt-Weld
BW12 - 3/4" Butt-Weld
BW16 - 1" Butt-Weld

M4 - 1/4" Medium Pressure
M6 - 3/8" Medium Pressure
M9 - 9/16" Medium Pressure
M12 - 3/4" Medium Pressure
M16 - 1" Medium Pressure

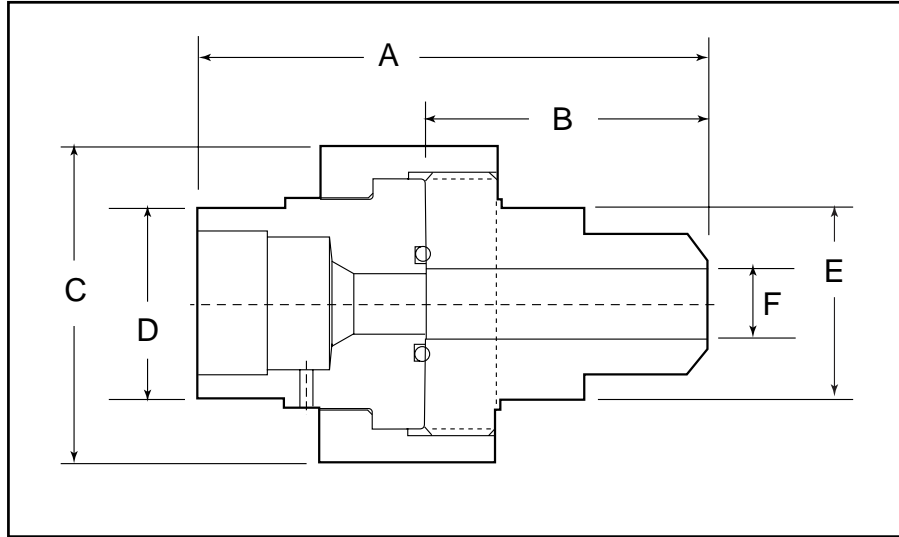
H4 - 1/4" High Pressure
H6 - 3/8" High Pressure
H9 - 9/16" High Pressure

P4 - 1/4" NPT
P6 - 3/8" NPT
P8 - 1/2" NPT

Note: Special material ez unions may be supplied with four flats in place of standard hex.

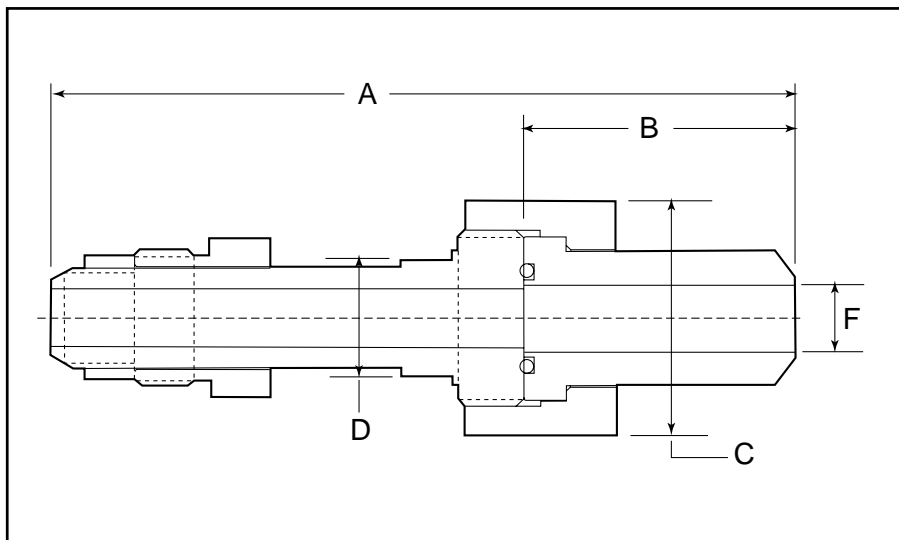
EZ-Union Female to Male Adapter - Medium Pressure to Butt-Weld Adapters

Catalog Number	Female M/P	Male BW	Dimension inches (mm)					
			A	B	C Hex	D Across Flats	E Across Flats	F Diameter
15EZ166BW6	SF375CX	1" Tube	3.63 (92.20)	2.00 (50.80)	2.25 (57.15)	1.38 (35.05)	1.38 (35.05)	0.50 (12.70)
15EZ169BW6	SF562CX	1" Tube	3.63 (92.20)	2.00 (50.80)	2.25 (57.15)	1.38 (35.05)	1.38 (35.05)	
15EZ1612BW6	SF750CX	1" Tube	3.63 (92.20)	2.00 (50.80)	2.25 (57.15)	1.38 (35.05)	1.38 (35.05)	



EZ-Union Male to Male Adapter - Medium Pressure to Butt-Weld Adapters

Catalog Number	Male M/P	Male BW	Dimension inches (mm)					
			A Hex	B	C Hex	D Across Flats	E Across Flats	F Diameter
15EZMAM12BW16	SF750CX	1" Tube	5.50 (137.70)	2.00 (50.80)	1.75 (44.45)	0.87 (22.09)	-	0.50 (12.70)



Note1: EZ-Unions are constructed from 316 SS and are supplied with a Buna-N o-ring as standard.
Weld ends are made from super Duplex F255.

Note 2: Gland and collar supplied with high pressure connections.

Maximum pressure rating is based on the lowest rating of any component. Actual working pressure may be determined by tubing pressure rating, if lower.

Note: For pressure rating see ordering procedure.
All Dimensions for reference only and subject to change.

For prompt service, Autoclave stocks select products. Consult factory.