

ATKOMATIC

 **CIRCLE SEAL CONTROLS, INC.**
A division of CIRCOR International, Inc.

14,000 Series

Stainless Steel, Direct Lift, 0 to 3000 PSIG

High Pressure Valve Configurable for Variety of Fluid Applications

Features

- Direct acting valve
- Pressure to 3000 psig depending on fluid and orifice size
- Barstock construction
- Can be mounted in any orientation
- Stainless steel construction on all wetted parts – 316 for pressure containing parts and plunger material is 416 stainless that is treated for increased corrosion resistance
- Optional stem materials of Teflon®, Kel-F, or 440 stainless steel
- Media temperatures from -423° F to +400° F
- Will handle fluids with viscosity up to 150 SUS
- Suitable for use with wide variety of fluid including: air, gasses, liquids, hydraulic fluids, steam, cryogenic fluids, and corrosive fluids
- Ports are oriented inline or at 90° degrees (inlet on side & outlet on bottom)
- Pipe sizes from 1/4" & 3/8" NPT (British BSPT ports available)
- Flow orifices of 1/16", 5/64", 3/32", and 1/8"
- C_v from .093 to .40
- Compact size and relatively low current draw with AC coils
- Class H coils are standard
- Coils housings available in NEMA 1 (standard), NEMA 4 (waterproof), NEMA 7 (explosion-proof for hazardous locations), and combination NEMA 4 and 7

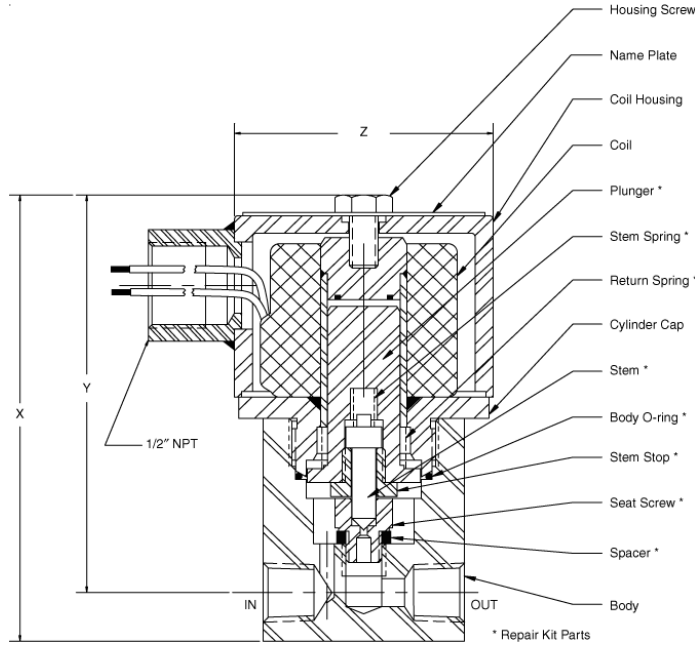
Operational Pressures (No minimum pressure differential)

Orifice Size	Gases		Liquids to 40 SUS		Liquids over 40 SUS		Steam	
	A.C.	D.C.	A.C.	D.C.	A.C.	D.C.	A.C.	D.C.
1/16	3000	3000	3000	3000	3000	3000	200	200
5/64	2500	2100	2000	1400	1800	1300	200	200
3/32	1900	1100	1400	1100	1000	850	200	200
1/8	450	300	300	225	275	175	200	200

2301 Wardlow Circle, P.O. Box 3300
Corona, California 92878
tel 909-270-6200
fax 909-270-6201
www.circle-seal.com
am_sales@circle-seal.com
ind_sales@circle-seal.com

14,000 Series

14,810 3/8" Valve – shown with a NEMA 7 explosion-proof coil housing & AC coil



X	Y	Z	Shipping Weight (lbs)
AC Valve			
4"	3 1/16"	2"	4
DC Valve			
6 9/16"	5 3/8"	2 3/4"	6

Orifice	Cv
1/16"	.093
5/64"	.15
3/32"	.22
1/8"	.40

Catalog Num. Prefix	Pipe Size
14800	1/4"
14810	3/8"

How to Order

148 **x** **0** - **x** **x** **x** **x** **x** **x** **x** **x** **x** **x** **x** **x**

CONNECTION SIZE ————
0 1/4" **1** 3/8"

VOLTAGE AC/60 Hz ————
0 AC/50 Hz or DC Voltage
1 100 VAC **4** 230 VAC
2 115 VAC **5** 460 VAC
3 200 VAC

VOLTAGE AC/50 Hz ————
0 AC/60 Hz or DC Voltage
1 110 VAC **2** 220 VAC

VOLTAGE DC ————
0 AC Voltage
1 12 VDC **2** 24 VDC **3** 125 VDC

BODY PORT LOCATION ————
B Inline
H 90°

CONNECTION TYPE ————
(P) NPT
(J) British PipeThread

COIL HOUSING
E Explosion-proof
C Combined Water- & Explosion-proof
S Standard
W Waterproof

FLUID MEDIA TYPE
1 Gas
2 Liquid up to 40 SUS
3 Liquid from 41 SUS to 150 SUS
4 Steam
5 Cryogenic

SEAL MATERIAL
A Teflon®
B Buna-N
C Viton®

STEM (SEAT) MATERIAL
A Teflon®
B Kel-F
C 440 Stainless Steel

ORIFICE SIZE
1 1/16" **3** 3/32"
2 5/64" **4** 1/8"

Viton® is a registered trademark of DuPont Dow Elastomers.
Teflon® is a registered trademark of DuPont.